

Rozelle Interchange

WestConnex

Overhead bridge and shared user path removal | February 2020

The Rozelle Interchange is the final stage of WestConnex providing an underground connection to the New M4 and New M5 tunnels, and a bypass of Victoria Road between Iron Cove and the ANZAC Bridge. The Rozelle Interchange will also connect to the future Western Harbour Tunnel.



Removal of Victoria Road overhead bridge and temporary closure of shared path connection to the ANZAC Bridge

From **8 March 2020** there will be two key changes to connectivity in Rozelle:

- the Victoria Road overhead bridge will be permanently closed and the structure removed in stages in the weeks following
- the shared path connection from Victoria Road to ANZAC Bridge will be closed for approximately six months while we build a temporary connection over our site.

To cross Victoria Road, pedestrians and cyclists will be detoured via the signalised crossings at Gordon Street or at The Crescent.

To access the ANZAC Bridge pedestrians and cyclists will be detoured via James Craig and Sommersville roads.

The citybound bus stop on Victoria Road opposite Hornsey Street (ID 203916) will be relocated 240m north nearer to the Gordon Street crossing prior to these changes. The bus stop will remain at this new location until late 2023 when it will be moved back near to its original location.

We understand that this will be a significant change for pedestrians and cyclists and have provided further information overleaf about alternate routes and further changes to connectivity.

When the project is completed, connectivity for pedestrians and cyclists across Victoria Road will be via an underpass. The Victoria Road to ANZAC Bridge shared path connection will be reinstated to an alignment very similar to what exists currently.

Key Information

Access to the Victoria Road overhead bridge will be closed from **8 March 2020**.

The shared path connection from Victoria Road to the ANZAC Bridge will also be closed from **8 March 2020**.

For more information

Drop in to the Community Information Centre

Open 9am to 5pm
Monday to Friday
(excluding public holidays)

84 Lilyfield Road,
Rozelle, NSW 2039

1800 660 248

info@rozelleinterchange.com.au

westconnex.com.au

We speak your language



Visit westconnex.com.au

Need an interpreter?

Call the Translating and

Interpreting Service on **131 450**.



Australian Government

BUILDING OUR FUTURE



Constructed by

**JOHN
HOLLAND**

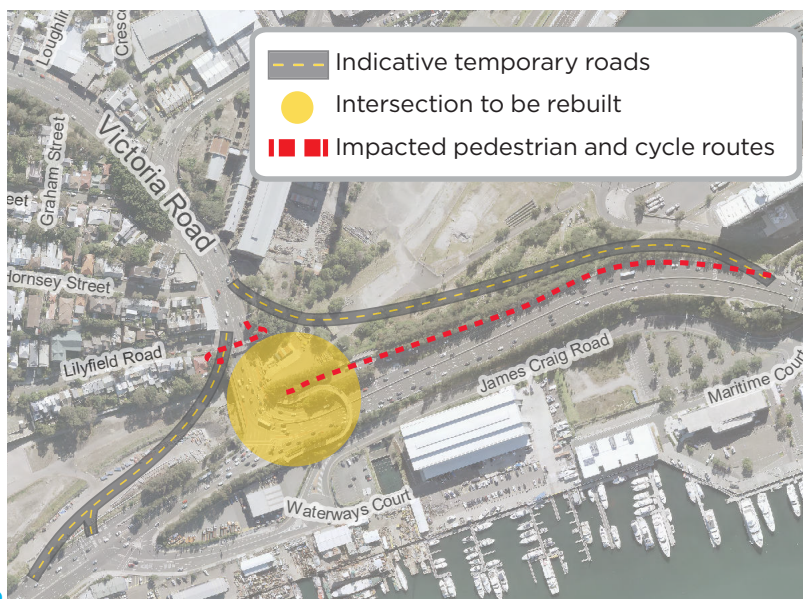


Why is the Victoria Road overhead bridge being removed?

The current intersection at Victoria Road and The Crescent will be rebuilt in stages. This will enable the construction of the tunnel exit ramps and a new shared pedestrian and cyclist underpass.

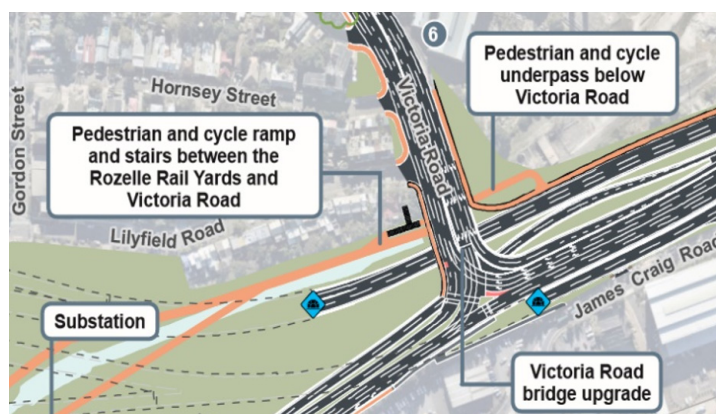
Before we rebuild this busy intersection, temporary roads need to be built to maintain traffic flow whilst we are working. The temporary roads cannot be built with the overhead bridge in place.

See adjacent map which illustrates location of temporary roads. These temporary roads will be removed upon completion of the newly built intersection.



Will the overhead bridge be replaced?

The overhead bridge **will not** be replaced. Upon project completion there will be an underpass below Victoria Road for cyclists and pedestrians. This was shown in the 2017 *M4-M5 Link Environmental Impact Statement* (see illustration below).



Were other options considered to temporarily replace the bridge?

Two options were considered:

- to build a temporary overpass
- to build a temporary underpass through the construction site.

These options are not viable. A temporary overhead bridge would require installing a central support on Victoria Road which would mean permanent traffic lane closures, while a temporary underpass located within the site is not safe for cyclists and pedestrians travelling through a live construction site, particularly when the intersection above is being demolished.

Why is the Victoria Road to ANZAC Bridge connection being closed?

The shared path connection to ANZAC Bridge needs to be closed to enable us to realign and widen the adjacent traffic lanes.

Once the overhead bridge is gone, how will I cross Victoria Road?

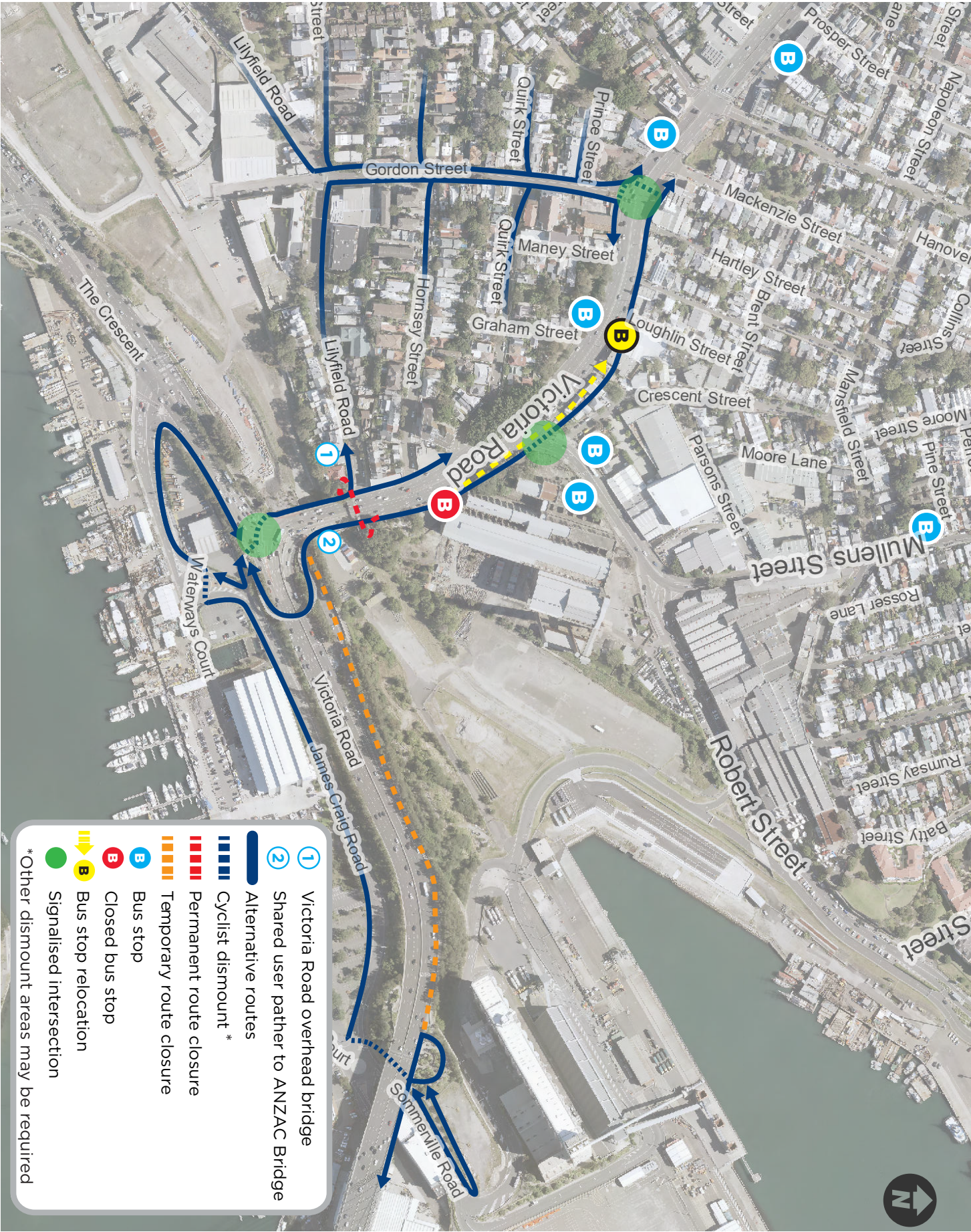
To cross Victoria Road, you can use either:

- the signalized intersection of Gordon Street and Victoria Road (refer to map across). This will provide access to the bus stop and to the Beatrice Bush (horseshoe) Bridge.
- the two-phased signalized road crossing at the Victoria Road/The Crescent intersection.

With the Victoria Road to ANZAC Bridge shared path closed, how will I get to/from the city?

From **8 March 2020** for a period of approximately six months there will be no direct connection between Victoria Road and the ANZAC Bridge shared path. Pedestrians and cyclists can access ANZAC Bridge by using the Beatrice Bush (horseshoe) Bridge, or the two-phased road crossing at the Victoria Road intersection, and then connect to James Craig Road and Sommerville Road onto the looped ramp connection to the bridge (please see map across). There will be areas where cyclists will be required to dismount. Signage will be in place to direct pedestrians and cyclists.

Pedestrian and cyclist access





Key information about the work

What will the work involve?

The removal of the Victoria Road overhead bridge and shared path connection to the ANZAC Bridge will be carried out in stages over a number of weeks from 8 March 2020.

Initial preparation work will involve:

- closing access by installing fencing and signage around the two structures
- removing existing bridge infrastructure including signage, lighting and balustrades
- weight testing
- installation of large lifting frames and other lift-supporting infrastructure.

Once preparation activities are complete, the bridge and shared path will be removed in sections.

Removal of the Victoria Road overhead bridge

The first section to be removed is the middle span which sits above Victoria Road. This work will take place out of hours when traffic volumes are at their lowest. This work will require the closure of multiple lanes on Victoria Road from about 9pm with a full closure for approximately 1.5 hours taking effect from 1am. Local adjoining streets will also be closed at this time and detours will be in place.

When: Saturday 21 March

Work hours: 9pm to 5am

Expected noise level: high

Contingency: Saturday 28 March

The following streets will be closed to Victoria Road on this night from 9pm:

- Prosper, Ellen, MacKenzie, Joseph, Loughlin streets and Lilyfield Road
- Evans, Darling, Gordon and Roberts streets will only have city bound turn lanes closed.

A small section of Lilyfield Road (near Victoria Road) will be used on the night as a laydown area for equipment and support vehicles and will require the removal of some parking spaces. Once the removal of the mid section of the overhead bridge is complete, the east and west overhead ramps will be removed.

Removal of the shared path to ANZAC bridge

This structure will be demolished progressively from within our site and as such will be mostly completed during the day.



When will work happen?

Work will mostly take place during our standard construction hours:

- **7am to 6pm** Monday to Friday
- Night work is scheduled between **6pm and 7am**

Activities scheduled at night will tie in with our planned nightwork calendar for March and April. This work will have a high noise impact.

Equipment needed for this work includes: saw cutters, jack hammers, cranes, excavators, large truck to transport middle span of bridge once it is removed.

We will email you with the closure date once confirmed.

To sign up to our mailing list please email us:

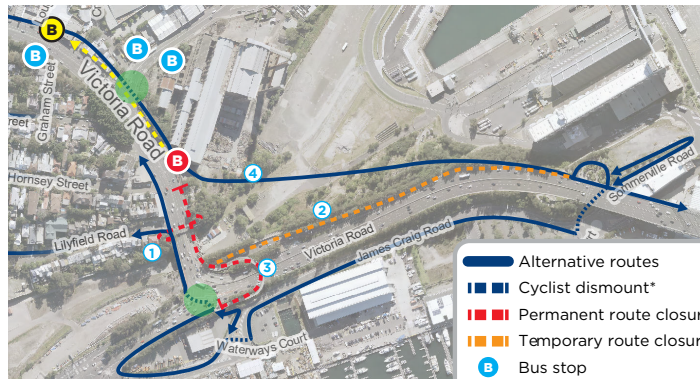
info@rozelleinterchange.com.au

Other upcoming changes for cyclists and pedestrians



The Beatrice Bush (horseshoe) Bridge from Victoria Road to James Craig Road will also be closed and removed later this year.

Before this connection is closed, the temporary shared path connecting Victoria Road to the ANZAC Bridge will be open (see map below). This is expected to take place August 2020.



Key areas on the map:

- 1. Victoria Road overhead bridge** closed from March
- 2. Shared path to ANZAC Bridge** closed from March
- 3. Beatrice Bush (horseshoe) Bridge** closed in approximately six months
- 4. New temporary shared path connection** to be open in approximately six months



Over the coming months, there will be further changes to current pedestrian and cyclist routes at Iron Cove and along The Crescent/ Victoria Road.



Please follow signs and allow extra time for your journey. These further changes will be detailed in the monthly notifications.